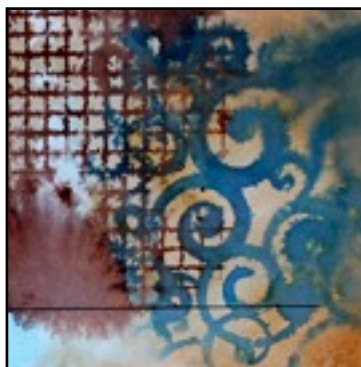
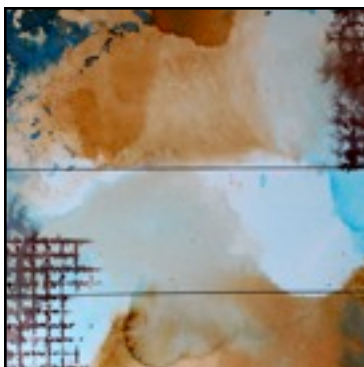


The **215 Marker Board** offers an ultra smooth, consistent hot press surface perfect for when creating with either alcohol or water-based markers.

This project includes a watercolor background effect using water based brush markers. The **215 Marker Board** offers a sturdy and durable substrate, with little or no warping and the resulting background works beautifully with lettering for inspiring or humorous signs.

### Materials

- One 9" x 12" - 215 Marker Board
- Water based Brush Markers
- Permanent Black Markers in a variety of widths
- Water Mister
- White plastic palette (a piece of clear acetate adhered to white paper)
- Stencils or found items for adding texture
- Ruler



1. Choose your color palette; here I used browns, sepia and blues tones.
2. With the plastic palette, cover the surface with the lightest marker color using the brush tip. Spritz with water and lay down onto the surface of the **215 Marker Board**. Do one color at a time, letting the colors blend together. Completely cover the board with color and let dry.
3. Repeat this method using a plastic stencil or any flat, plastic found object to add interest and texture to your piece. In the sample I used a swirl stencil and a found plastic mesh. Let dry.
4. When you are happy with your background, you are now ready to add your lettering. Trace or freehand your saying onto the board using the brush markers.
5. Extra grid lines, outlines and lettering were added using the permanent markers.