

Dedicated to Delivery
Nasco
Life/form®

3 *Life/form.*
Year
Warranty
Simulators
& Trainers

CRiSis™ Manikin
Auscultation Kit
LF03967U
Instruction Manual



Life/form® *Products by Nasco*

Limited Warranty

Nasco warrants to the purchasers of **CRiSis™** products that they will be free from defects in material and workmanship for a period of three years from the date of purchase. Nasco will repair any defect reported within three years of the date of purchase at no charge. Products found to be defective may be returned to the authorized Nasco dealer from whom the item was purchased, or returned directly to Nasco. Nasco will be liable under this limited warranty only if **CRiSis™** products have been serviced properly as directed in the operating manual.

Nasco will not be responsible for damage caused by unauthorized repairs or modifications that have been made, or if the product has been damaged through misuse, accident, or abuse. This warranty does not cover wear and tear or expendables such as batteries, lubricant, and replacement lungs. There are no other expressed or implied warranties of merchantability, fitness of purpose, or otherwise on "Airway Larry" products, parts, and accessories.



The **CRiSis™** Manikin Auscultation Kit allows you to create a manikin to suit your changing needs. This update package is compatible with all versions of **CRiSis™** manikins.

This manual will guide you in setting up, using, and maintaining each of the components.

By reading and following all instructions carefully and completely, you can be sure your **CRiSis™** Manikin will provide years of valuable service.

Cleaning

Normal surface soil can be removed from the trainer with mild soapy water. Do not allow water to contact electrical components. Stubborn stains may be removed with Nasco Cleaner (LF09919U). Simply apply the Nasco Cleaner to the soiled area and wipe clean with a soft cloth.

List of Components

- Auscultation Chest
- SmartScope™
- Remote Control

To convert your **CRiSis™** manikin into an Auscultation **CRiSis™** manikin using the update package:

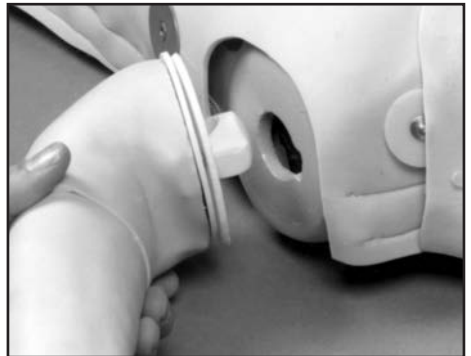


Figure 1

1. Remove the arms from the old manikin by rotating the arms to an upward position so that the indentation and the slot on the body match. Pull the arms from the old body, then insert the arms into the new manikin. **(See figure 1.)**
2. Remove the Defibrillation Chest Skin, lungs, and upper compression plate from the old manikin. **(See figure 2.)**

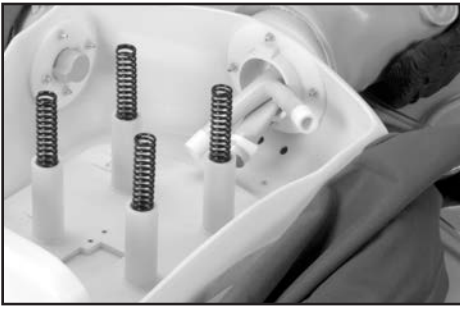


Figure 2

Note: If your manikin has CPR electronics:

- A. Unplug the wire coming from the reader mounted to the upper compression plate.



Figure 3

- B. Remove the plastic barcoded slide from the lower compression plate. (See figure 3.)

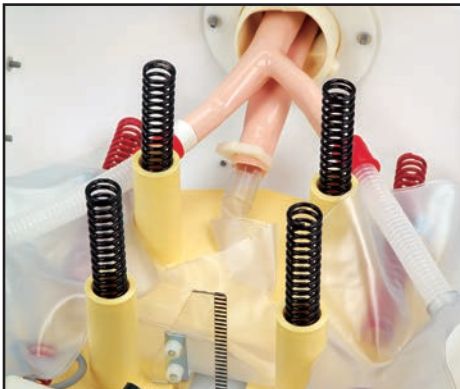


Figure 4

- C. Transfer the CPR electronic connection board and wire to the new manikin. (See figure 4.)

- D. After transferring the CPR electronics to the new manikin, check the alignment of the lower slide and the upper reader groove to ensure proper readings.



Figure 5

3. Disconnect the tracheal airway in the old manikin from the lower airway/lung system. (See figure 5.)

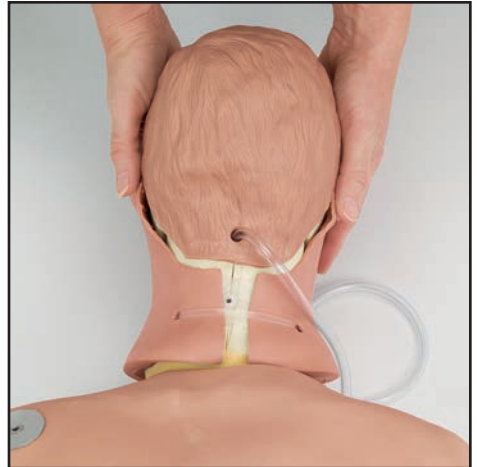


Figure 6

4. Rotate the head so the face is backward, match the indentation with the slots in the body, and pull the head from the body. Transfer the head to the new manikin. (See figure 6.)

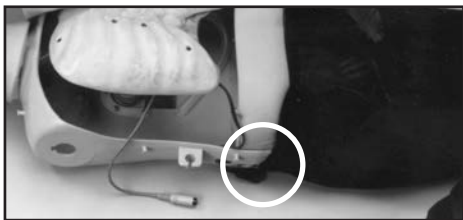


Figure 7

5. Remove the legs, load box, and load box bracket from the old manikin by removing the wing nuts. Transfer these items to the new manikin. **(See figure 7.)**

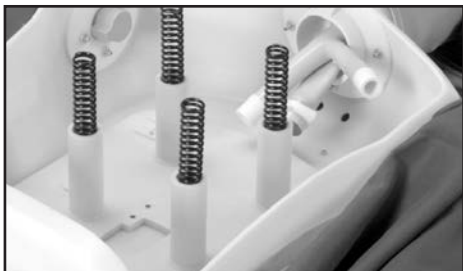


Figure 8

6. Remove the upper compression plate from the new manikin.
7. Remove the springs and the lower compression plate from the old manikin. Transfer to the new manikin. **(See figure 8.)**
8. Replace the compression plate in the new manikin.



Figure 9

9. Position the lungs that you removed from the old manikin on top of the compression plate in the new manikin. **(See figure 9.)**

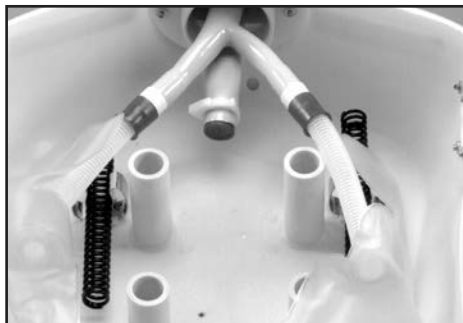


Figure 10

10. Attach the tracheal airway to the lower airway/lung system. **(See figure 10.)**
11. Place the new auscultation chest on top of the upper compression plate on the new manikin.



Figure 11

12. Position the defibrillation chest skin on the new manikin and reattach using the hook-and-loop straps. **(See figure 11.)**

About the Auscultation Simulator

The **Life/form**® Auscultation Trainer Simulator duplicates heart and lung conditions selected by the instructor by wireless remote control. The student must palpate to identify the correct auscultation sites. They will hear different heart and lung sounds as the SmartScope™ is moved from site to site.

The simulator has six heart sites and five lung sound sites on the anterior surface and midaxillary sites. The remote control can select from 12 different heart conditions, as well as 16 lung conditions. The instructor can select any condition, then switch to another condition easily so the student can compare sounds and make a diagnosis.

The remote control does not have to be pointed directly at the manikin or stethoscope to operate. One remote control will operate multiple sets of SmartScopes™ and manikins simultaneously. Great for group instruction. The range of the remote control is up to 100 feet.

General Instructions for Use

To begin using the Auscultation Trainer, press the red power button. This turns on the remote control and sends a signal to activate the stethoscope as well. After the unit is activated, the display will be in the “status” mode, displaying the current menu settings for the heart and lung conditions.

To select a new condition, press either the heart or lung button. This will put the display into the menu mode. The user can select a condition by either using the number buttons, or by viewing the conditions in sequence using the scroll button. After the condition is selected, press the enter button to activate.

The remote control can be programmed to these heart conditions:

- 01 Normal
- 02 Aortic regurgitation
- 03 Pulmonary stenosis
- 04 Mitral stenosis
- 05 Holosystolic
- 06 Mid-systolic
- 07 S3 Gallop
- 08 S4 Gallop
- 09 Systolic click
- 10 Atrial septal defect
- 11 PDA
- 12 VSD

The remote control can be programmed to these lung conditions:

- 01 Normal Lung
- 02 Normal Vesicular
- 03 Wheezes
- 04 Mono wheeze
- 05 Fine crackle
- 06 Coarse crackle
- 07 Ronchi crackle
- 08 Stridor
- 09 Cavernous
- 10 Bronchovesicular
- 11 Bronchial
- 12 Pulmonary edema
- 13 Infant
- 14 Friction rub
- 15 Egophony
- 16 Pectoriloquy

Consult the enclosed laminated card for lung and heart sound site locations.

To listen to the selected sounds, place the earpieces in ears, angled in a forward position. Place the diaphragm of the SmartScope™ over one of the appropriate sites on the manikin (see diagram on back).

As an alternative, the Amplifier/ Speaker System (LF01189U) can be used, allowing an entire classroom to hear at the same time. To connect the speaker, plug the speaker cord into the speaker jack on the top of the SmartScope™ box. When a speaker is connected to the SmartScope™, the earpieces will not work. Place the diaphragm of the SmartScope™ over the appropriate sites on the manikin.

Note: The remote has a battery saver that shuts the unit down after eight minutes if the remote is left on the same setting. To prevent it from shutting down, select a different heart or lung sound within the eight-minute period of time.

Available Supplies

LF01144U Additional SmartScope™

LF01145U Additional Auscultation Manikin Torso

LF01148U Additional Remote Control

LF01189U Amplifier/Speaker System

Other Available *Life/form*® Simulators

- LF00698U** Adult Injectable Arm (White)
LF00855U Male Catheterization
LF00856U Female Catheterization
LF00901U Prostate Examination
LF00906U Ostomy Care
LF00929U Surgical Bandaging
LF00957U Enema Administration
LF00958U Pediatric Injectable Arm
LF00961U Intramuscular Injection
LF00984U Breast Examination
LF00995U Arterial Puncture Arm
LF00999U Pediatric Injectable Head
LF01005U First Aid Arm
LF01008U Intradermal Injection Arm
LF01012U Heart Catheterization (TPN)
LF01019U Ear Examination
LF01027U Peritoneal Dialysis
LF01028U Suture Practice Arm
LF01034U Suture Practice Leg
LF01036U Spinal Injection
LF01037U Hemodialysis Practice Arm
LF01038U Episiotomy Suturing Set
LF01042U Suture Kit
LF01062U Pelvic, Normal & Abnormal
LF01063U Stump Bandaging, Upper
LF01064U Stump Bandaging, Lower
LF01069U Cervical Effacement
LF01070U Birthing Station
LF01082U Cricothyrotomy
LF01083U Tracheostomy Care
LF01084U Sigmoidoscopic Examination
LF01087U Central Venous Cannulation
LF01095U Blood Pressure Arm
LF01108U Infant Intraosseous Infusion
LF01121U Advanced IV Arm
LF01131U Venipuncture and Injection Arm
LF01139U Advanced IV Hand
LF01142U Auscultation Trainer
LF01143U Testicular Exam
LF01152U Male & Female Catheter
LF01155U Advanced CPR Dog
LF01162U Venatech IV Trainer
LF01174U NG Tube & Trach Skills
LF01184U Venatech IM & Sub Q
LF01193U Special Needs Baby
LF03000U **CPARLENE**® Series
LF03601U Adult Airway Management Trainer with Stand
LF03602U Adult Airway Management Manikin
LF03609U Child Airway Management Trainer with Stand
LF03616U Child **CRiSis**™ Manikin
LF03617U Deluxe Child **CRiSis**™ Manikin with Arrhythmia Tutor
LF03620U PALS Update Kit
LF03623U Infant Airway Management Trainer with Stand
LF03632U Child Intraosseous Infusion/ Femoral Access Leg on a Stand
LF03633U Child Airway Management Trainer Torso
LF03693U **Basic Buddy**® CPR Manikin
LF03699U "Airway Larry" Airway Management Trainer
LF03709U Infant **CRiSis**™ Manikin
LF03720U **Baby Buddy**™ Infant CPR Manikin
LF03750U Fat Old Fred
LF03760U Airway Management/Cricoid Pressure Trainer
LF03770U Chest Tube
LF03953U **CRiSis**™ Manikin, Complete
LF03955U Deluxe **CRiSis**™ Manikin
LF03956U Deluxe "Plus" **CRiSis**™ Manikin
LF03965U Adult **CRiSis**™ Auscultation Manikin
LF03966U Adult **CRiSis**™ Auscultation Manikin with ECG Simulator
LF04000U **GERI**™/**KERI**™ Manikin Series
LF04200U Adult Sternal Intraosseous Infusion
LF06001U CPR Prompt® Adult/Child Manikin
LF06012U CPR Prompt® Infant Manikin
LF06200U CPR Prompt® Keychain Rescue Aid
LF06204U CPR Prompt® Rescue and Practice Aid

Nasco Fort Atkinson

901 Janesville Avenue, P.O. Box 901
Fort Atkinson, Wisconsin 53538-0901
1-800-558-9595

eNasco.com • E-mail: lifeform@eNasco.com